

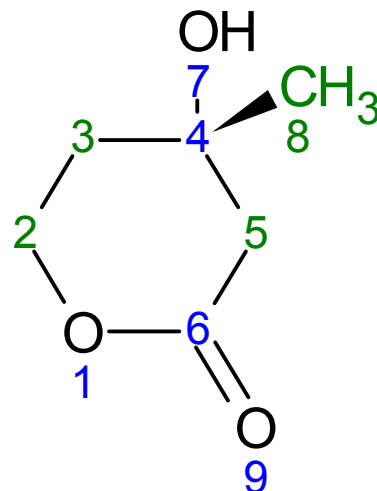
# Mevalonolactone

HMDB06024

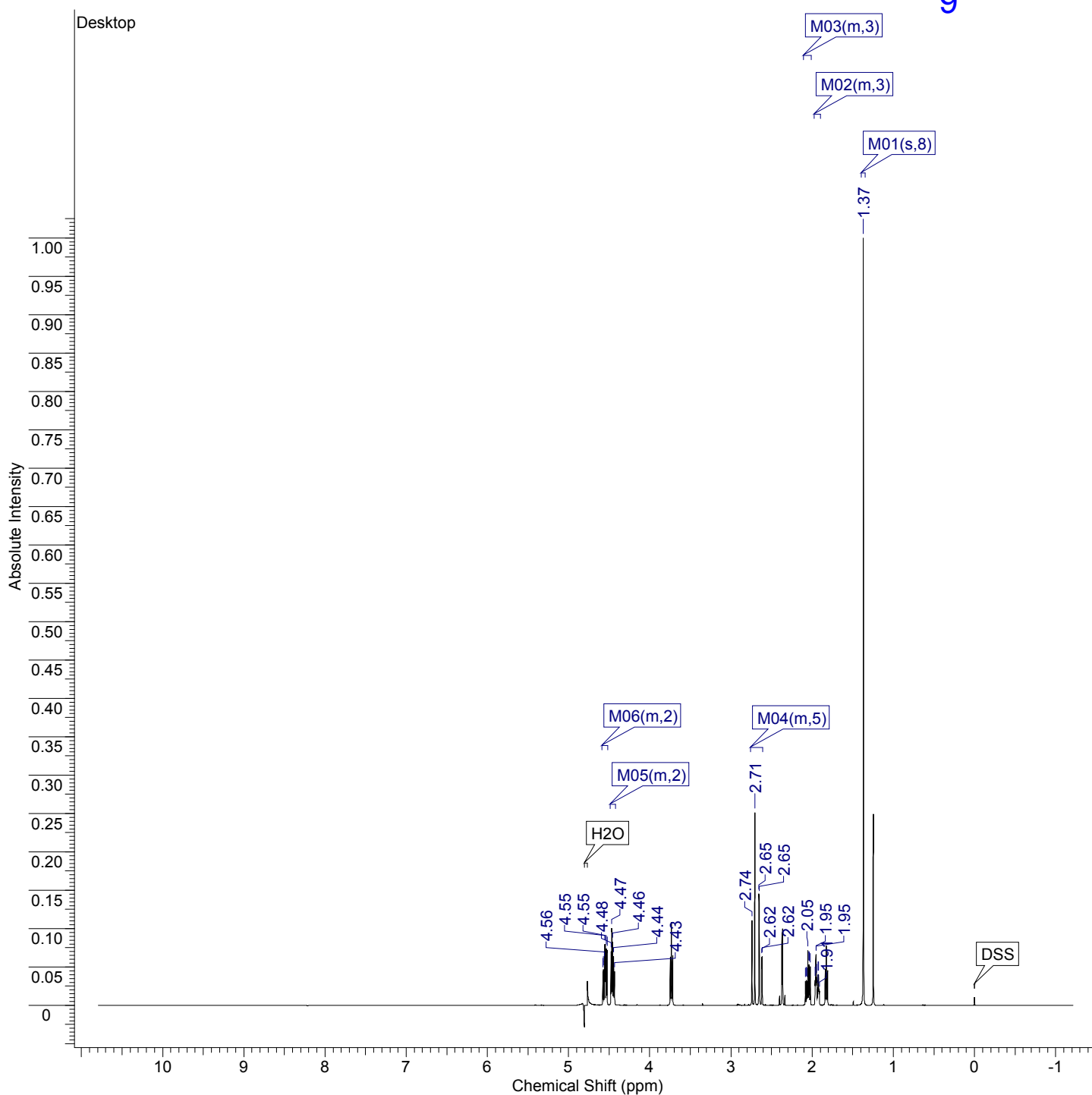
$^1\text{H}$  NMR spectrum: 500MHz in  $\text{H}_2\text{O}$

Sample:  $\sim 50\text{mM}$  in  $\text{H}_2\text{O}$  and pH 7.00

Referenced to DSS



## Full $^1\text{H}$ NMR Spectrum



# Mevalonolactone

HMDB06024

$^1\text{H}$  NMR spectrum: 500MHz in  $\text{H}_2\text{O}$

Sample: ~50mM in  $\text{H}_2\text{O}$  and pH 7.00

Referenced to DSS

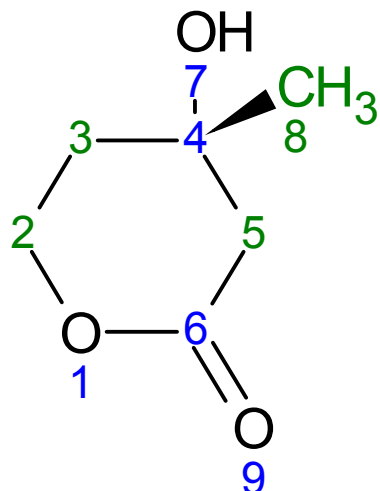


Table of Peaks

No.	(ppm)	(Hz)	Height
1	1.37	683.8	1.0000
2	1.91	955.3	0.0187
3	1.92	957.4	0.0211
4	1.92	959.8	0.0395
5	1.92	961.8	0.0400
6	1.93	964.2	0.0232
7	1.93	966.3	0.0217
8	1.94	969.9	0.0329
9	1.94	972.0	0.0369
10	1.95	974.4	0.0655
11	1.95	976.4	0.0665
12	1.96	978.8	0.0368
13	1.96	980.9	0.0330
14	2.02	1010.8	0.0504
15	2.03	1016.5	0.0524
16	2.04	1020.7	0.0528
17	2.05	1026.1	0.0713
18	2.06	1031.1	0.0319
19	2.07	1035.3	0.0329
20	2.08	1040.9	0.0319
21	2.62	1307.1	0.0639
22	2.62	1309.1	0.0627
23	2.65	1324.7	0.1438
24	2.65	1326.6	0.1456
25	2.71	1352.5	0.2509
26	2.74	1370.0	0.1105
27	4.43	2216.2	0.0444
28	4.44	2221.6	0.0637
29	4.45	2226.6	0.0609
30	4.46	2227.7	0.0831
31	4.47	2232.5	0.0962
32	4.47	2233.2	0.1007
33	4.48	2237.8	0.0704
34	4.53	2262.3	0.0724
35	4.54	2266.7	0.0742
36	4.55	2272.1	0.0798
37	4.55	2273.6	0.0603
38	4.55	2276.7	0.0795
39	4.56	2278.1	0.0580
40	4.57	2283.6	0.0466
41	4.58	2288.2	0.0441

Table of Assignments

No.	Atom	Exp. Shift (ppm)	Multiplet
1	8	1.37	M01
2	3	1.94	M02
3	3	2.05	M03
4	5	2.66	M04
5	2	4.46	M05
6	2	4.55	M06

Table of Multiplets

No.	Shift1 (ppm)	H's	Type	Atom1	Multiplet1	(ppm)
1	4.55	1	m	2	M06	[4.52 .. 4.59]
2	1.94	1	m	3	M02	[1.90 .. 1.97]
3	2.05	1	m	3	M03	[2.01 .. 2.11]
4	4.46	1	m	2	M05	[4.42 .. 4.49]
5	2.66	2	m	5	M04	[2.61 .. 2.76]
6	1.37	2	s	8	M01	[1.34 .. 1.39]

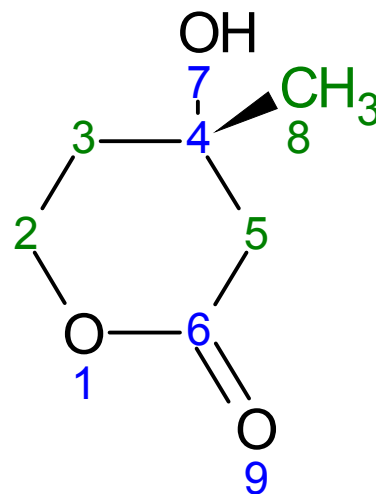
# Mevalonolactone

HMDB06024

$^1\text{H}$  NMR spectrum: 500MHz in  $\text{H}_2\text{O}$

Sample: ~50mM in  $\text{H}_2\text{O}$  and pH 7.00

Referenced to DSS



## Zoomed $^1\text{H}$ NMR Spectrum

