

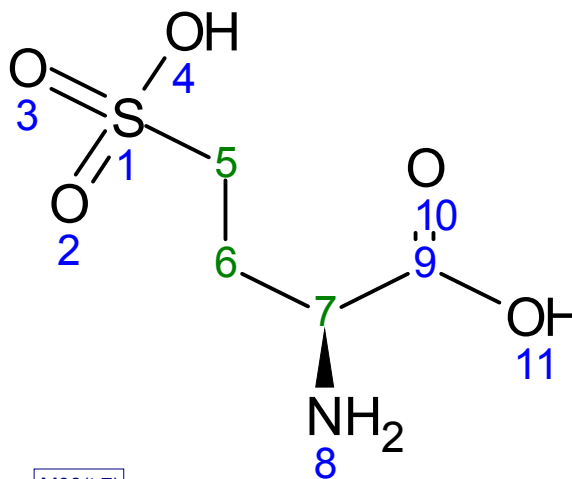
L-Homocysteic acid

HMDB02205

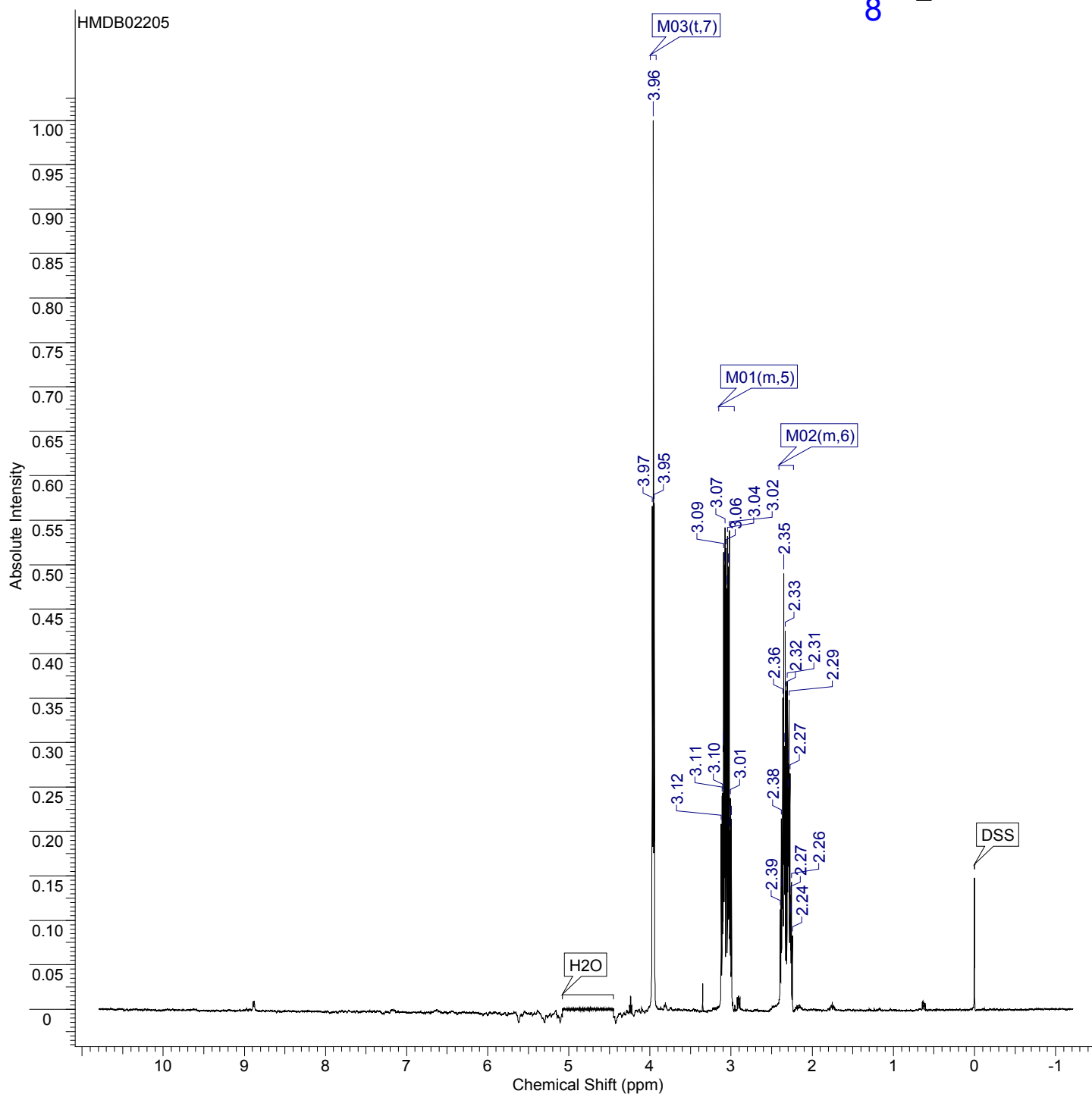
^1H NMR Spectrum: 500MHz in H_2O

Sample: $\sim 50\text{mM}$ in H_2O and pH 7.00

Referenced to DSS



Full ^1H NMR Spectrum



L-Homocysteic acid

HMDB02205

¹H NMR Spectrum: 500MHz in H₂O

Sample: ~50mM in H₂O and pH 7.00

Referenced to DSS

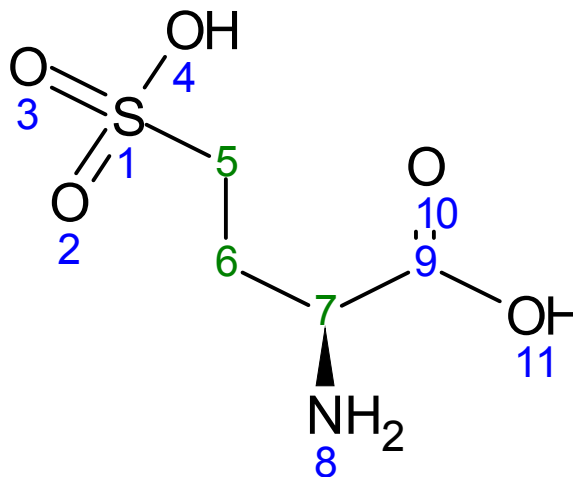


Table of Peaks

No.	(ppm)	Height
1	2.24	0.0829
2	2.26	0.1430
3	2.26	0.1044
4	2.27	0.1282
5	2.27	0.2651
6	2.29	0.3483
7	2.29	0.2759
8	2.30	0.2446
9	2.31	0.3686
10	2.32	0.3584
11	2.33	0.4254
12	2.34	0.2582
13	2.34	0.2957
14	2.35	0.4901
15	2.36	0.3505
16	2.37	0.1585
17	2.37	0.1338
18	2.38	0.2142
19	2.39	0.1122
20	3.00	0.2138
21	3.01	0.2375
22	3.01	0.2009
23	3.02	0.5386
24	3.03	0.4975
25	3.04	0.5321
26	3.05	0.4729
27	3.06	0.5182
28	3.07	0.5417
29	3.08	0.4998
30	3.09	0.2965
31	3.09	0.5140
32	3.10	0.2433
33	3.11	0.2400
34	3.12	0.2085
35	3.95	0.5694
36	3.96	1.0000
37	3.97	0.5658

Table of Assignments

No.	Shift1 (ppm)	H's	Type	J (Hz)	Atom1	Multiplet1	(ppm)
1	3.96	3	t	6.29	7	M03	[3.92 .. 3.99]
2	3.06	5	m	-	5	M01	[2.96 .. 3.15]
3	2.32	5	m	-	6	M02	[2.23 .. 2.41]

Table of Multiplets

No.	Atom	Exp. Shift (ppm)	Multiplet
1	6	2.32	M02
2	5	3.06	M01
3	7	3.96	M03

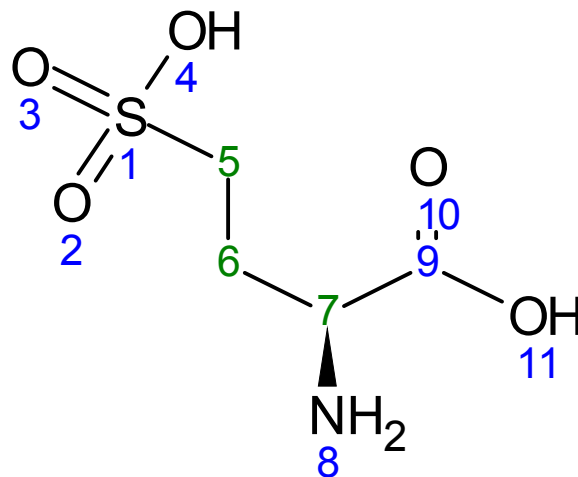
L-Homocysteic acid

HMDB02205

^1H NMR Spectrum: 500MHz in H_2O

Sample: ~50mM in H_2O and pH 7.00

Referenced to DSS



Zoomed ^1H NMR Spectrum

